

## Linear Drainage System **Z882 Pre-Sloped Polyethylene** 12-inch Heavy-Duty Performance Drainage Solutions



### System Highlights

#### Labor Savings

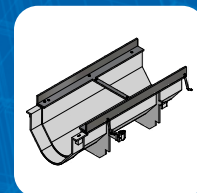
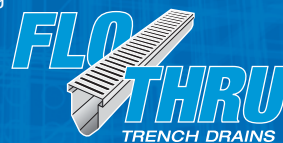
- Save up to 75% installation time compared to cast-in-place systems while maintaining structural integrity
- Longer, lightweight pieces allow for lower job site inventory, ease of system alignment, and reduced worker fatigue
- Easy to clean with no specialized tools needed

#### Versatility

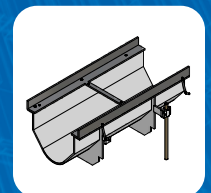
- Appropriate for applications requiring loading from DIN EN-1433 pedestrian Class A to 200,000 wheel-loading Class F, including FAA
- Heavy-duty frame available in galvanized steel, stainless steel, and structural steel
- Factory installed sidewalls enable longer runs and increased hydraulic capabilities
- Unique system features provide superior flow rate

#### Quality

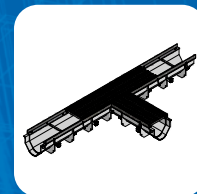
- HDPE is a highly impact-resistant material; dropping channels, and other impacts are much less likely to result in jobsite or shipping breakage
- Standardized hardware makes replacement a fast and hassle-free process



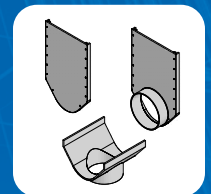
Heavy-Duty Frame



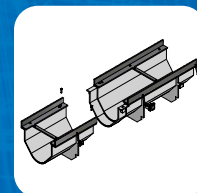
Integral Rebar Clips



Factory Fabrications



Termination Fittings

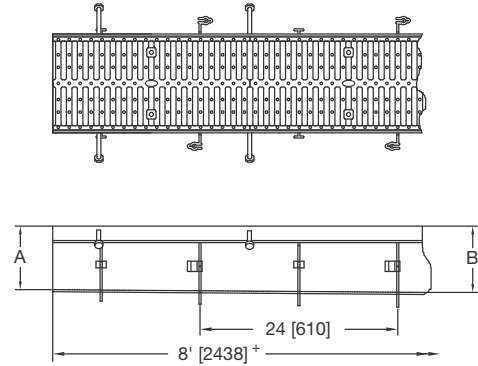
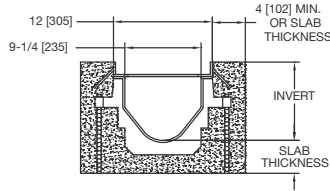


Mechanical Interlocking Connection



System Accessories

# Zurn Perma-Trench 12" Linear Drainage



**ENGINEERING SPECIFICATION:** Zurn Z882 Channels shall be 96 [2438] long, 12 [305] wide reveal and have a 9.25 [235] throat. Modular channel sections shall be made of 0% water absorbent High Density Polyethylene (HDPE). Shall have a positive mechanical connection between channel sections that will not separate during the installation and shall mechanically lock into the concrete surround every 12[305]. Channels shall weigh less than 5.05 lbs.[2.29kg] per linear foot, have a smooth, 3[76] radiused self cleaning bottom with a Manning's coefficient of 0.009 and 1.04% or neutral 0% built in slope. Channels shall have rebar clips standard to secure trench in its final location. Shall be provided with standard DGC grates that lock down to frame. Zurn 12 [305] wide reveal Ductile Iron Slotted Grate conforming to ASTM specification A536-84, Grade 80-55-06. Ductile iron grate is rated class C per the DIN EN1433 top load classifications. Supplied in 24[608] nominal lengths with 0.81[21] wide slots, and 1.5[38] bearing depth. Grate has an open area of 57.50 sq. in per ft.[121708 sq. mm per meter]. The 0.25[6] thick Heavy Duty Carbon Steel Frame Assembly conforms to ASTM specification A36 with 10 - 4 [102] long concrete anchors per 96 [2438]. Grate lockdown bars are to be integral to the frame and E-coated finish with 3000hr salt spray testing per ASTM B-117. All welds must be performed by a certified welder per ASTM standard AWS D1.1 . Frames Shall be produced in the USA.

## ACCESSORIES and FINISHES

### GRATE OPTIONS

- ADA Meets American with Disabilities Act Requirements (USA Only)
- BDC Black Acid Resistant Epoxy Coated Ductile Grate - Class C
- BDE Black Acid Resistant Epoxy Coated Ductile Grate - Class E (USA Available)
- DC Ductile Iron Solid Cover
- DGC Ductile Iron Slotted Grate - Class C (USA Available)
- DGE Ductile Iron Slotted Grate - Class E (USA Available)
- DGF Ductile Iron Slotted Grate - Class F
- FG Fabricated Galvanized Steel Slotted Grate (USA Only)
- FS Fabricated Stainless Steel Slotted Grate (USA Only)
- GADA Galvanized Ductile ADA Slotted Grate - Class C (USA Only)
- GDC Galvanized Ductile Slotted Grate - Class C (USA Available)
- GDE Galvanized Ductile Slotted Grate - Class E (USA Available)
- GDF Galvanized Ductile Slotted Grate - Class F
- GG Fiberglass Grate
- GHPD Galvanized Heel-Proof Ductile Grate
- HPD Heel-Proof Ductile Slotted Grate
- PG Perforated Galvanized Steel Grate (USA Only)
- PS Perforated Stainless Steel Grate (USA Only)
- RFG Reinforced Galvanized Slotted Grate (USA Only)
- RFS Reinforced Stainless Steel Slotted Grate (USA Only)
- RPG Reinforced Galvanized Perforated Grate (USA Only)
- RPS Reinforced Stainless Steel Perforated Grate (USA Only)
- SBG-L Stainless Steel Bar Grate (USA Only)

### SUFFIX OPTIONS

#### Outlet Adapters

- E1 Closed End Cap
- E4 4" No-Hub End Outlet
- E6 6" No-Hub End Outlet
- E8 8" No-Hub End Outlet
- U4 4" No-Hub Bottom Outlet
- U6 6" No-Hub Bottom Outlet
- U8 8" No-Hub Bottom Outlet

### MISCELLANEOUS OPTIONS

- VP Vandal-Proof Center Lockdown
- JC Joint Connector

Trench No.	Dimension in Inches [mm]		Flow Rate* (cfs)	Flow Rate* (gpm)	Flow Rate* (lps)
	A	B			
8201	6.25 [159]	7.25 [184]	1.241	557	35
8202	7.25 [184]	8.25 [210]	1.725	774	49
8203	8.25 [210]	9.25 [235]	2.226	999	63
8203N	9.25 [235]	9.25 [235]			
8204	9.25 [235]	10.25 [260]	2.745	1232	78
8205	10.25 [260]	11.25 [286]	3.271	1468	93
8206	11.25 [286]	12.25 [311]	3.808	1709	108
8206N	12.25 [311]	12.25 [311]			
8207	12.25 [311]	13.25 [337]	4.347	1951	123
8208	13.25 [337]	14.25 [362]	4.893	2196	139
8209	14.25 [362]	15.25 [387]	5.443	2443	155
8209N	15.25 [387]	15.25 [387]			
8210	15.25 [387]	16.25 [413]	5.996	2691	170
8211	16.25 [413]	17.25 [438]	6.551	2940	186
8212	17.25 [438]	18.25 [464]	7.106	3189	202

\*Adding sidewalls increases flow capacity.

### Common Applications

- Industrial Parks
- Airplane Hangars
- Highways
- Airports
- Parking Lots
- Gas Stations
- Water Parks
- Port Facilities
- Pharmaceuticals
- Food Processing
- Chemical Plants



**ZURN INDUSTRIES, LLC FLO-THRU OPERATION**  
 1801 PITTSBURGH AVENUE, ERIE, PA, U.S.A. 16502, PHONE: 814/455-0921, FAX: 814/454-7929 www.zurn.com  
 In Canada: **ZURN INDUSTRIES LIMITED**  
 3544 NASHUA DRIVE, MISSISSAUGA, ONTARIO L4V 1L2, PHONE: 905/405-8272, FAX: 905/405-1292